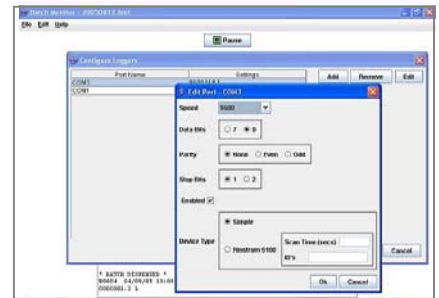


BatchMonitor[®] Software

FEATURES

- Batch monitoring software for batching devices such as:
 - ManuFlo ME3000-SC Batch Controllers (serial i/f); and
 - weighing indicator devices (RS485 interface).
- Records batches to a printable daily log file.
- Runs on a PC.



The BatchMonitor software:

- runs on a PC which has at least 1 serial port (or a USB port and a serial-to-USB converter).
- writes to a daily log file all input that is received on the PC's serial interface. The log files can be printed at any time or kept for billing or reference.

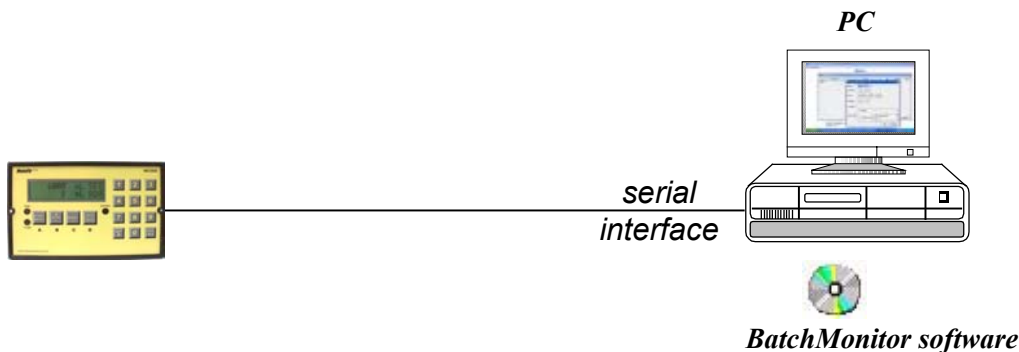
ManuFlo ME3000-SC Batch Controllers have a serial port that outputs data of each batch when the batch occurs. Note that since ME3000 Controllers use the same instrument housing, and the same 10-pin Weidmuller receptacle plug, as other ManuFlo Batch Controller models, upgrading to a ME3000-SC is instant with no rewiring necessary.

Installation on PC

The BatchMonitor software is supplied as a single installation executable (15MB). When run, this will install the BatchMonitor program and any necessary support software, and will also set up the BatchMonitor program to be started automatically when a user logs in to the PC.

Connection

Your PC's serial interface port can be connected directly to the serial interface of a ManuFlo ME3000-SC Batch Controller.



Contact the exclusive distributor
Mackeral Software direct.

Mackeral Software
Phone : +61 7 4126-8513
Fax : +61 7 4126-5153
Email : batchmonitor@mackeralsoftware.com
Web : <http://www.mackeralsoftware.com/>

Due to continuous product improvement, specifications may change without notice.

ManuFlo [®]™

Flow Measurement & Control Products

a division of

MANU ELECTRONICS PTY LTD

ABN: 47 002946303

0510/1

41 Carter Rd, Brookvale NSW 2100

Sydney Australia

Ph: + 61 2 9905-4324, +61 2 9938-1425

Fax: + 61 2 9938-5852

Web: www.manuelectronics.com.au

Email: sales@manuelectronics.com.au