

CompactMag – Electromagnetic irrigation flowmeter battery powered

The new battery powered
electromagnetic flowmeter
available from ManuFlo
for agricultural applications.

- CompactMag is a low cost user-friendly electromagnetic flowmeter.
- One-piece construction in polypropylene, powered by 6x AA batteries. 1-3 years battery life.
- Available in DIN 25, 50, 80 mm (1", 2" and 3") sizes.
- Connections offered: Manifold clamping flanges compatible with fitting kits for DIN, BSP, NPT and other common connections.
- 1% accuracy.



Features

- Electromagnetic style meter with stainless steel electrodes
- Suitable for water and any liquid with conductivity $\geq 20 \mu\text{S}/\text{cm}$
- Accuracy: $\pm 1\%$ from 10 % to 100 % of full scale range
- Powered by 6x AA batteries. Batteries easily interchangeable
- Battery life: 1 year with meter in use, 3 years in sleeping mode
- LCD display 128x64 px graphical
- Display shows: actual flow, totalizer and auxiliary totalizer
- Units possible: flow: m^3/h , l/s , l/min
Totalizers: m^3 , l . Resettable totaliser.
- Bidirectional measurement. (Only one direction for totalizer)
- Empty pipe detection and battery saving mode
- Body material: polypropylene
- Connections: Flange clamps
- Working pressure 150 psi or 10.3 bars
- Sizes available: 25, 50, 80 mm (1, 2 and 3 inches)
- 4 stainless steel electrodes
- No moving parts
- No earthing rings required (built in earthing electrodes as standard)
- Protection NEMA 4X
- Ambient temperature range from -10°C to 50°C .
For high outdoor temperatures a sunshade is needed.



ManuFlo [®]TM

Flow Measurement & Control Products

a division of

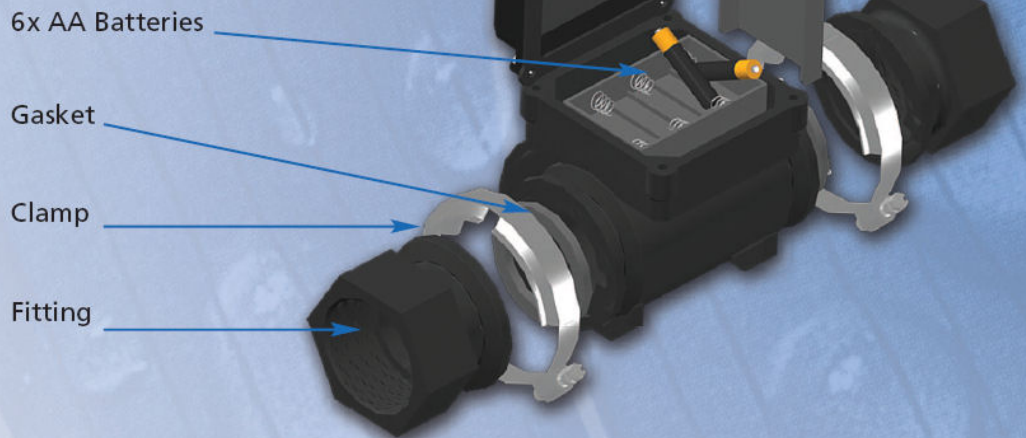
MANU ELECTRONICS PTY LTD

Rev: 1103/1

41 Carter Road, Brookvale
Sydney NSW 2100 Australia
Ph: + 61 2 9905-4324, 9938-1425
Fax: + 61 2 9938-5852

Web: www.manuelectronics.com.au
Email: sales@manuelectronics.com.au

Installation with fitting kit



Fitting kits available for Manifold

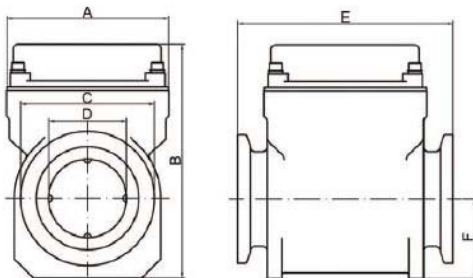
	25 mm	50 mm	80 mm
Male BSP	1" Male BSP	2" Male BSP	3" Male BSP
Female NPT	1/2", 3/4" and 1" Female NPT	2" Female NPT	3" Female NPT
Male NPT	3/4", 1" and 1,1/4" Male NPT	2" Male NPT	3" Male NPT

Other fitting kits available on request

Dimensions

	A	B	C	D	E	F
25 mm	100	130	80	25.4	139.7	41.402
50 mm	100	150	82.55	50.8	139.7	51.562
80 mm	100	180	111	76.2	185	64.8

All dimensions in mm



Graphical display

Electronics housing

316SS electrodes

Polypropylene body



ManuFlo ®TM

