

### FEATURES

- Volumetric rotary piston principle, measures accurately in any position.
- Mechanical totaliser.
- 72 counts/litre @56LPM reed switch contact closure output for precision data collection and flowrate readings
- Designed to meet AS3565.1-1998
- Accuracy  $\pm 2\%$  (q-min to q-max)  
Repeatability  $\pm 0.15\%$



The CT5-S 20mm water meter is suitable for measurement of cold water upto 50°C with a working pressure upto 1500 kPa. The meter offers great accuracy and a long operating life for domestic drinking water applications.

The mechanical counter register is positioned for easy reading and displays from 0.02 to 9,999,999 Litres. The precision engineered rotary piston measuring chamber ensures accurate measurement even at very low starting flow rates. Meters can be installed in any position without affecting accuracy and require no onsite calibration. An inline filter element prevents blockages and an internal check valve stops backflows (can optionally have dual check-valves).

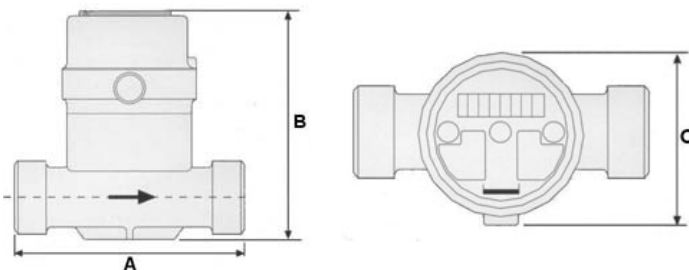
CT5-S flowmeters are fitted with a high resolution reed switch contact closure output. At the request of various water authorities, with Manuflo technology, 72.5 pulses per Litre output signal is achieved, which is the highest amount of pulses per Litre for a domestic water meter (whilst retaining the mechanical register). This allows capture of precision water measurement information to data-loggers and to other data collection devices. Very accurate data can then be obtained for water usage totals and flowrate habits of consumers. Electrical connection is via a 1.5 metre 2-core shielded cable.

All meters are supplied with a gasket seat coupling connection kit (optional ball seat available). CT5-S flowmeters are manufactured from high quality materials to meet Australian specification requirements.

**The CT5-S 20mm provides the best pulse output rate for domestic water meters, with 72.5 pulses/litre @ typically 21LPM.**

### SPECIFICATIONS

Size (mm)		20
Pulse output rate	Pulses/Litre	72.5
Mechanical register	Minimum Litres	0.02
	Maximum KL	9999.9999
Starting flow rate		0.033
Min. registration	Qr $\pm 5\%$ LPM	0.05
Min. trans. flow	Qt $\pm 2\%$ LPM	0.41
Nom. continuous flow	Qn $\pm 2\%$ LPM	41.6
Max. intermittent flow	Qs $\pm 2\%$ LPM	83.3
Weight with couplings	Kg	1.9



### Other Specifications

Headloss @ Qn <25kPa., Max. pressure rating 1500kPa, Max water temperature 50°C,

Accuracy Qt to Qs  $\pm 2\%$ , Repeatability  $\pm 0.15\%$ .

Reed switch pulse V.max:24V, I.max:50mA, with anti-bounce and current-limiting resistor fitted.

Cable 2-core, 1.5 metre length. (with some input devices to avoid bounce install a 450pF capacitor across input).

Other pulse data:- Typically 50% duty cycle pulse (equal on/off state), largest difference 46% on / 54% off state.

@Qmax flowrate 83.3LPM pulserate maximum frequency 100Hz. (1.388 LPS x 72.5 = 100.6Hz). Pulse value ranges with flowrates e.g. 73 ppl @6LPM, 72.5ppl @21LPM, 72ppl @56LPM, 71.8ppl @75LPM ranges.

Pipeline must be full at all times for correct measurement. Suitable for clean water only. Purge the pipeline prior to install. Once installed, to avoid damage to measuring chamber, bleed the liquid into the pipeline and flowmeter.

### DIMENSIONS mm

Model No:	CT5-S
Length A mm	152
Height B mm	145
Width C mm	92

### ORDERING CODES

Part	Size (mm)	Description of coupling set
CT5-S	20	Gasket seat $\frac{3}{4}$ "Bsp(m)
CT5-S-G	20	Ball seat $\frac{3}{4}$ "Bsp(f)