



Download ME6008M1 Event Log

ManuFlo TM Flow Measurement Products
A Division of Manu Electronics Pty Ltd
41 Carter Road,
Brookvale NSW 2100 Australia

Phone: +61 2 9938-1425 or +61 2 9905-4324
Fax: +61 2 9938-5852
E-mail: sales@manuelectronics.com.au
Website: <http://www.manuelectronics.com.au/>

© 2011 Manu Electronics Pty Ltd
1107/1

1. SERIAL INTERFACE OPTION ON THE ME6008M1

The ME6008M1 is available with an optional RS232 interface (Order Code option “-FP”) which is a DB9 female serial connector (see below) on the front face of the ME6008M1. This connector allows the downloading of the internal Event Log to a laptop/PC for analysis.



DB9 (Female) Serial connector

The receiving laptop/PC must have:

- A serial or USB port; and
- HyperTerminal software, which is supplied as a part of Windows up to Windows XP, or which can be downloaded from the Internet, at sites such as:

<http://www.hilgraeve.com/hyperterminal-trial/>

http://download.cnet.com/HyperTerminal-Private-Edition/3000-2155_4-10966768.html

<http://hyperterminal-private-edition.findmysoft.com/>

2 CONNECTION

2.1 Connection to a laptop which has a USB port

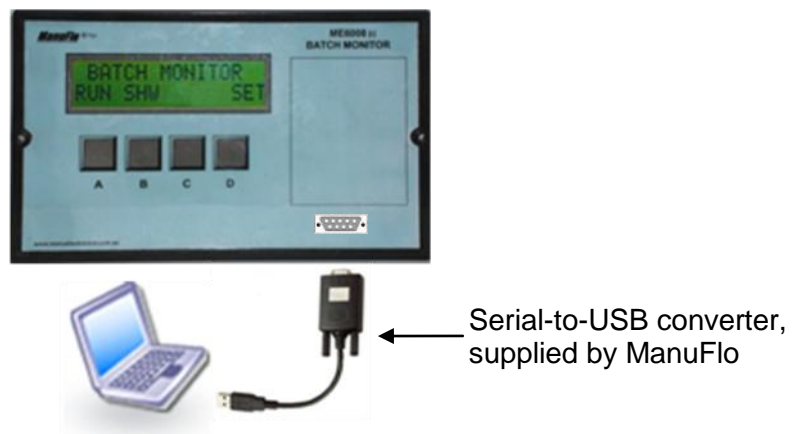
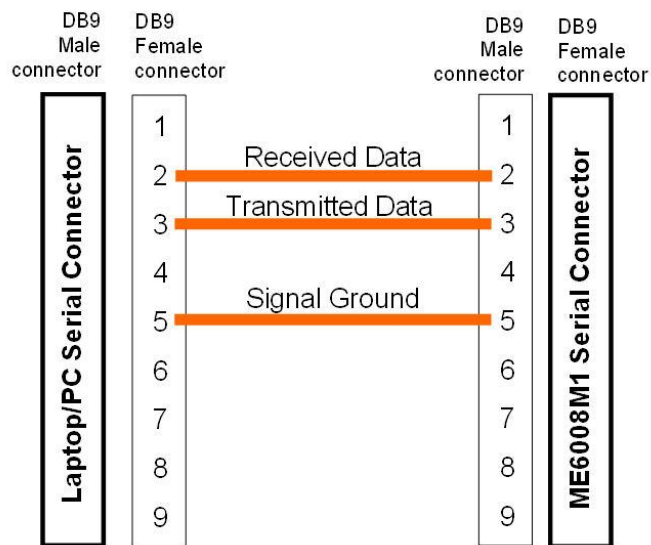


Figure 1. Connecting ME6008M1 to laptop which has a USB port

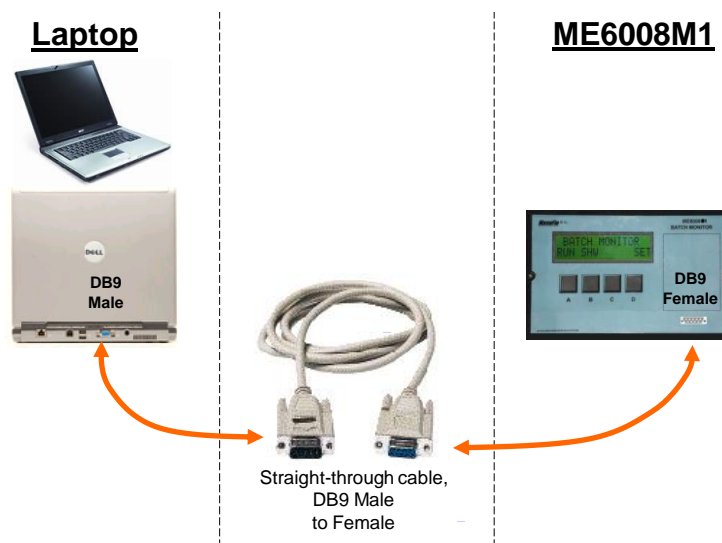
2.2 Connection to a laptop which has a serial port

Below is the cable wiring diagram for a serial connection between the ME6008M1 and a laptop or PC which has a serial port, to be able to download the Event Log.



Using a serial cable to connect ME6008M1 to a laptop/PC that has a serial port.

The user can construct their own cable for the serial connection, or there are commercially available cables and adapters, as shown below.



Connecting to a Laptop/PC which has a serial port.

type	ORDER CODE	
	from Dick Smith	from Jaycar
straight-through cable, DB9 Male to Female	X2610	WC7534

Cables commercially available in Australia for connecting to Laptop/PC.

3 EVENT LOG FORMAT

The ME6008M1 maintains an internal log of batches. The log is circular, so older data is overwritten by new data.

The format of data is:

DD/MM/YY HH:MM TTTTTTTTTTTTTTTTTT UU

where:

DD/MM/YY : Date.
HH:MM : Time (HH:MM in 24 hour format).
TTTTTTTTTTTTTTTTTTTT : Batch volume.
UU : The volume units. Either millilitres (mL) or Litres (L).

29/06/2005	11:30:10	000000000000002512	mL
29/06/2005	11:30:08	000000000000002512	mL
29/06/2005	11:29:59	000000000000000000	mL
29/06/2005	11:29:57	000000000000002500	mL
29/06/2005	11:29:49	000000000000000000	mL
29/06/2005	11:29:42	000000000000000000	mL
29/06/2005	11:29:32	000000000000009010	mL
29/06/2005	11:29:12	000000000000009010	mL
29/06/2005	11:29:11	000000000000009050	mL

Event Log Example

DOWNLOADING THE EVENT LOG

- 1 The Event log is accessed by downloading it from the ME6008M1 to a laptop or PC.
- 2 Connect the ME6008M1 to a laptop or PC:
 - If the laptop/PC has a USB port and not a serial port:
 - On first time use only, install the USB Converter software on the laptop:
 - Insert the Driver Software CD into the laptop CD/DVD drive;
 - Open the CD/DVD drive folder on your laptop;
 - Run installation file PL2303.EXE
 - Using the Serial-to-USB converter provided by ManuFlo, connect from the ME6008M1's RS232 female port to the USB port of a Laptop/PC (see section 2.1).
 - If the laptop/PC has a serial port: using a straight-through DB9 male-to-female cable, connect from the ME6008M1's RS232 female port to the male serial port of a Laptop/PC (see section 2.2).
- 3 On the Laptop/PC, start the HyperTerminal software.

- 4a If HyperTerminal has not already been configured to communicate with the ME6008M1, then start HyperTerminal.

In Windows XP, HyperTerminal is menu item:

Start > All Programs > Accessories > Communications > HyperTerminal

Go to step 5a.

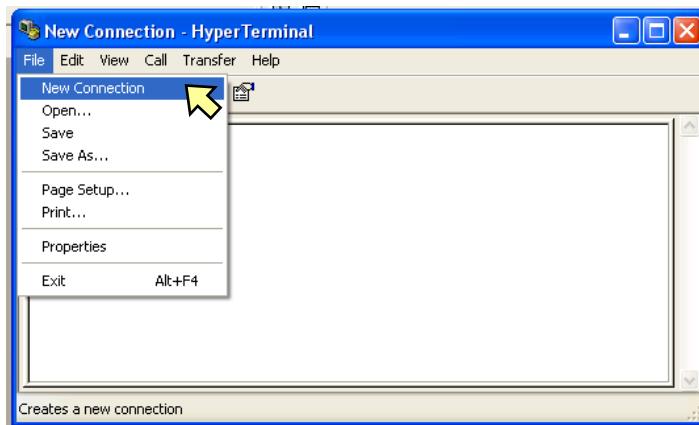
- 4b If HyperTerminal has already been configured to communicate with the ME6008M1 (as explained in this manual), then start the pre-configured connection.

In Windows XP, a pre-configured ME6008M1 HyperTerminal connection is under menu:

Start > All Programs > Accessories > Communications > HyperTerminal > ME6008M1.ht

Go to step 5d.

- 5a In HyperTerminal, create a *New Connection* and name it “ME6008M1”.



Click on OK.

- 5b Set *Connect Using* to the COM port corresponding to the Laptop/PC serial port. In most cases, this is the highest available COM number.



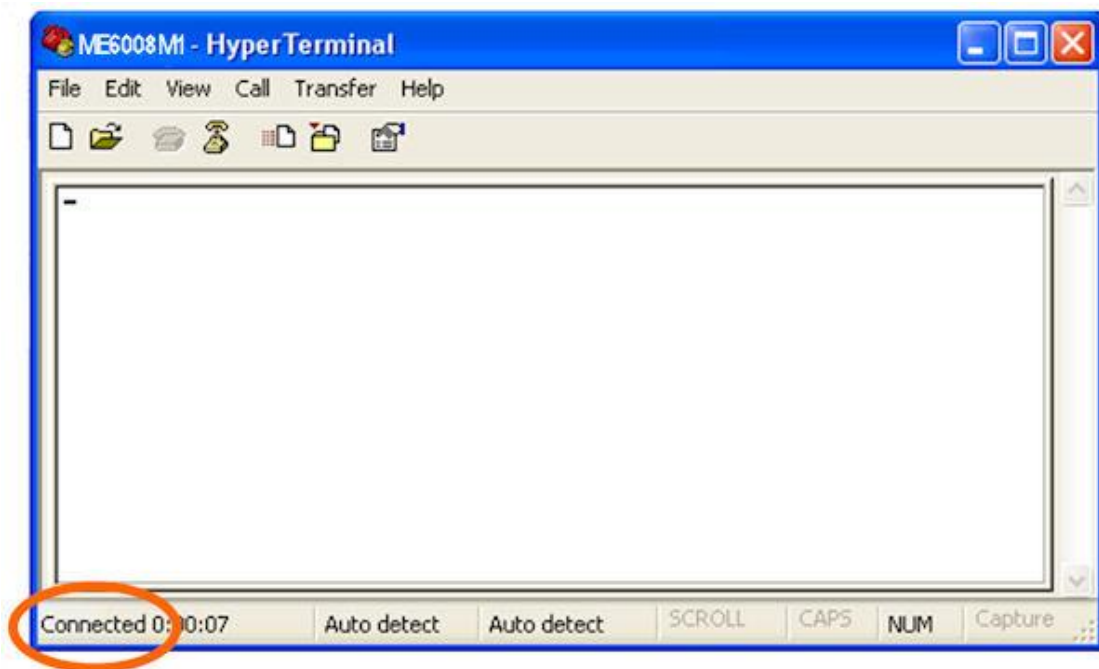
Click on OK.

- 5c Set the COM port settings:

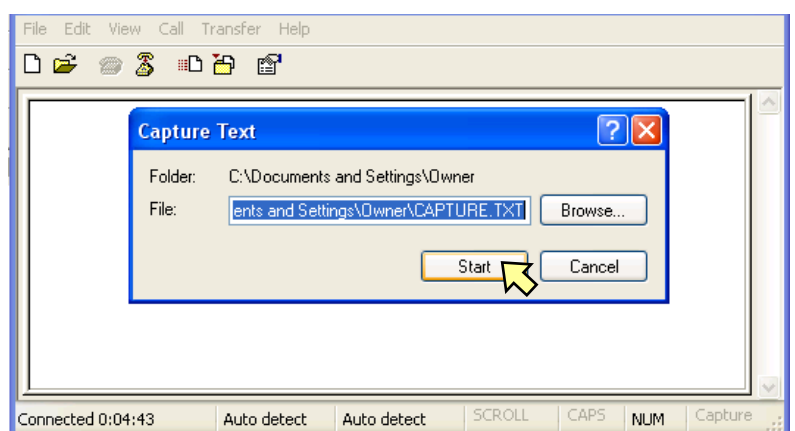
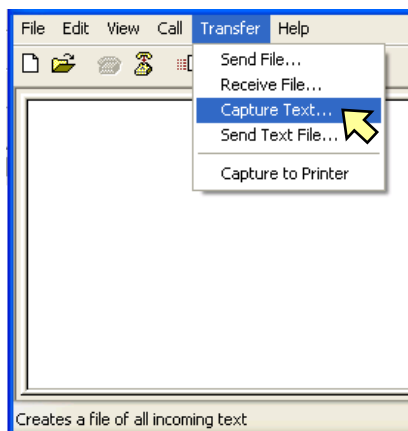


Click on OK.

5d The connection is now connected.

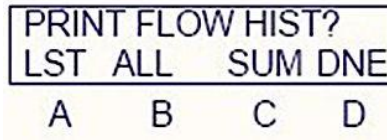


6 Enter the name of a file (e.g. CAPTURE.TXT) where the Event Log is to be written to (doesn't have to be a pre-existing file):



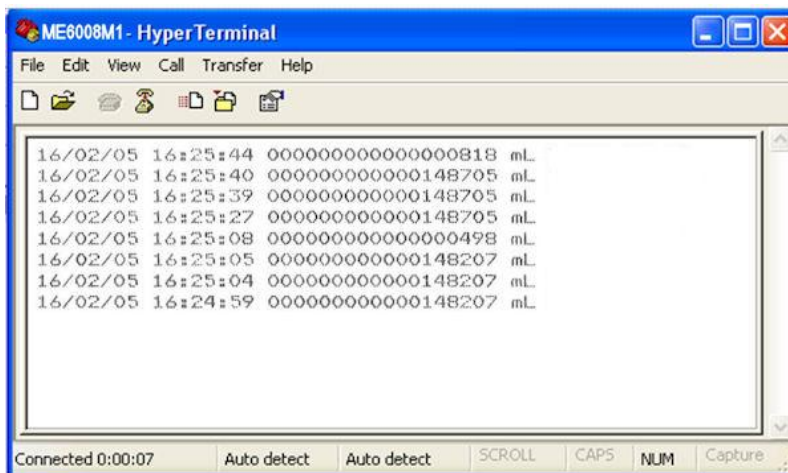
Click on Start.

- 7 On the ME6008M1, go to Screen 5 **PRINT FLOW HIST?** and press **ALL** (button B).



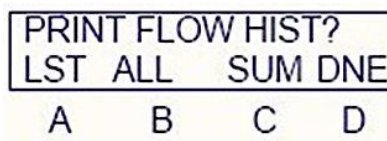
(For the ME6008M1 menu, see the datasheet at <http://www.manuelectronics.com.au/pdfs/ME6008M1.pdf>).

As the entire Event Log downloads, it will appear in the HyperTerminal Window and will simultaneously be written to the capture file.

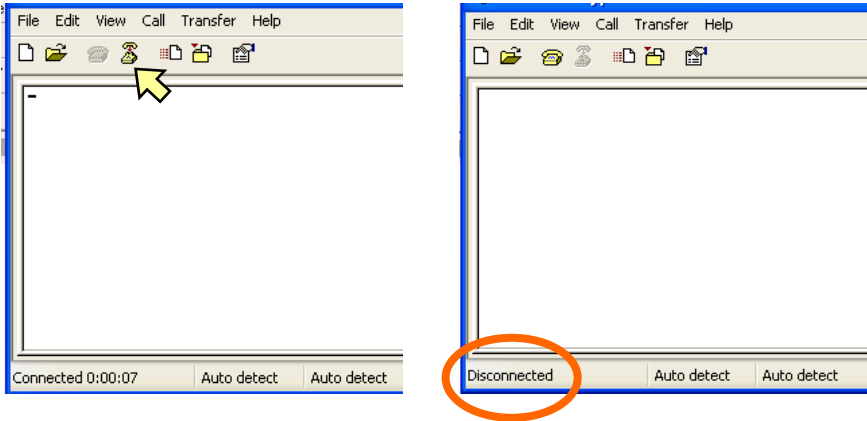


Note:
While the log is being dumped, the ME6008M1 will not respond to any button presses.

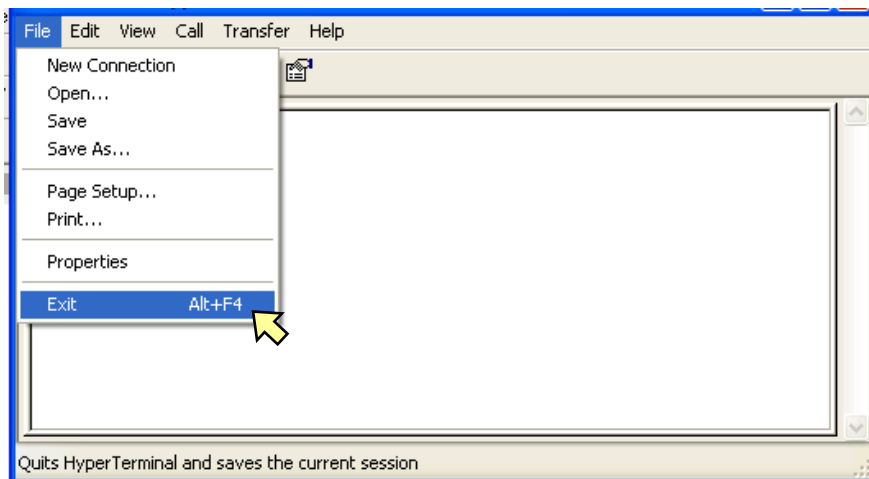
- 8
- When the output to the HyperTerminal Window stops, the event log dump is complete.
 - On the ME6008M1, press **DNE** (button D).



9 In HyperTerminal, click on the phone icon, and the connection disconnects.

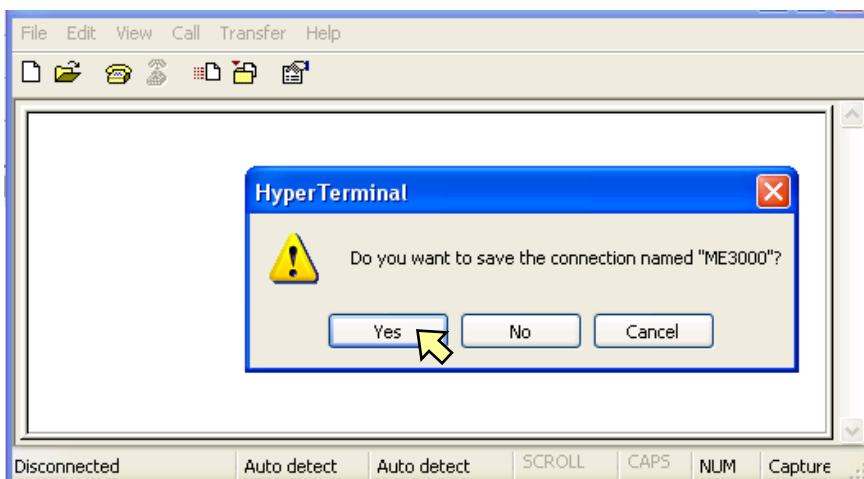


10a Exit HyperTerminal:



10b If this is the first time HyperTerminal has been set up for the ME6008M1, then you will be asked whether to save the connection.

Click on YES.



HyperTerminal will close.

11 To read the Event Log, open the capture file (which was set up in step 6).