

## FEATURES

- Ideal for irrigation and process applications
- Ideal for gravitational flows.
- Running (non-resetable) mechanical total.
- Optionally also with Reed Switch pulse output.
- Accuracy:  $\pm 2.5\%$
- Can pass small impurities without blockage.
- Can connect the optional pulse output to ManuFlo Indicators to provide resetable total display.



MEHR flowmeters (with pulse output)

The MEH and MEHR Multi-Jet flowmeters are available in sizes of 15 to 300mm, and are suitable for volume measurement of water.

They are available as a pure mechanical totaliser meter (MEH type), or with an added contact closure Reed Switch pulse output (MEHR type) for indication and control process applications.

The meters have a strainer on the inlet, and measurement is in the forward flow direction only. The register system operates by means of magnetic drive, and is sealed and separated from the water measurement system. Small impurities are able to be passed without blockage.

MEHR meters can be used as a resetable meter if connected to a ManuFlo ME5 resetable totaliser display. If a high pulse resolution MEHR flowmeter (sizes 15-40mm) is connected to a ManuFlo FRT303 Indicator, then the Indicator can display Flowrate along with a resetable Total and Grand Total.

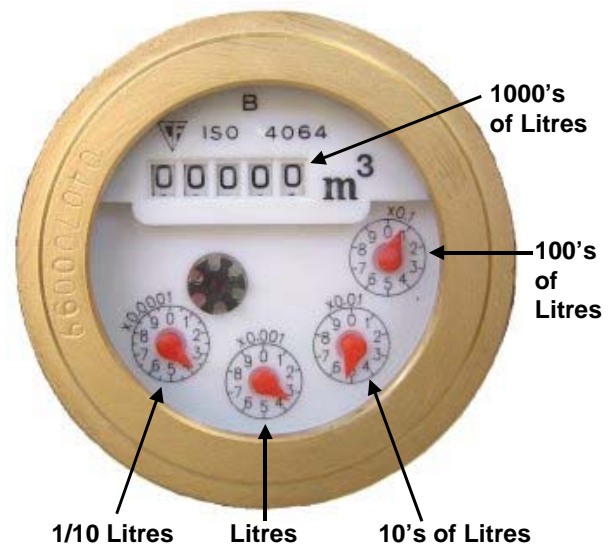
The meters capture low to medium flow measurement ranges, and so are ideal for gravitational flows or low pressure installations for irrigation and process applications.



20mm size



80mm size



MEH25 display (adding all indicators = total = 53.4 Litres)

## INSTALLATION

- Before installation, flush out all pipeworks.
- During installation, make sure the arrow marked on the meter body is in same direction as the water flow.
- The meter must be installed in a horizontal position only, with the display face up.
- Avoid freezing conditions.

## FLOWRANGES

DN (mm)	Flowrate (Litres/minute)				Register	
	Qmin	Qtran	Qnom	Qmax	Min L	Max m <sup>3</sup>
15 mm	0.7	2	25	50	0.1	99999
20 mm	1.2	4	41	83	0.1	99999
25 mm	1.7	6	58	115	0.1	99999
32 mm	3	10	100	200	0.1	99999
40 mm	5	17	166	330	1	999999
50 mm	7	25	250	450	1	999999
80 mm	20	67	667	2000		
100 mm	30	100	1000	3333		
150 mm	75	250	2500	5000		
200 mm	125	420	4167	8333		
250 mm	200	670	6666	13333		
300 mm	300	1000	10000	25000		

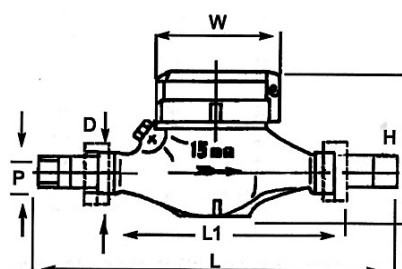
## TECHNICAL SPECS

Accuracy	±2.5% (Class-A) to ISO4064B.
Measurement type	≤50mm : Multi-jet ≥80mm : Woltex turbine
Temperature	< 40 °C
Water pressure	<1000 kPa
Casing	Brass/gunmetal.
Working chamber	Thermo-plastic.
Optional Pulse Output	Via internal Reed Switch. 300Ω current-limiting resistor fitted. Can switch up to 100mA . 2-metre pulse cable lead. Wiring code: White = signal; Shield = common.

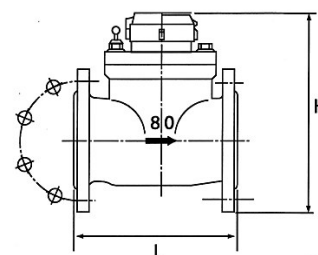
## DIMENSIONS

DN (mm)	Dimensions (mm)				Weight (kg)
	L	L1	W	H	
15mm	259	165	98	115	2
20mm	294	190	98	114	2
25mm	310	190	103	114	3
32mm	384	260	103	127	4
40mm	375	245	125	144	10
50mm	335			180	12
80 mm	225			280	16
100 mm	250			280	19
150 mm	300			230	38
200 mm	350			360	52
250 mm	450			360	105
300 mm	500			360	120

Dimensions may change. Use as guide only.



For ≤50mm size.



For ≥80mm size.

## ORDER CODES

Size (mm)	Totaliser only		Totaliser with Reed Switch pulse output					
	Order Code	ends <sup>#</sup>	Order Code	Pulse Output	ends <sup>#</sup>	Order Code	Pulse Output	ends <sup>#</sup>
15	MEH15	BM	MEHR15	20 pulses/Litre	BM	MEH15R10	1 pulse/ 10 Litres	BM
20	MEH20	BM	MEHR20	12.4 pulses/Litre	BM	MEH20R10	1 pulse/ 10 Litres	BM
25	MEH25	BM	MEHR25	12.4 pulses/Litre	BM	MEH25R10	1 pulse/ 10 Litres	BM
32	MEH32	BM	MEHR32	6.0 pulses/Litre	BM	MEH32R10	1 pulse/ 10 Litres	BM
40	MEH40	BM	MEHR40	2.4 pulses/Litre	BM	MEH40R10	1 pulse/ 10 Litres	BM
50	MEH50	BF				MEH50R10	1 pulse/ 10 Litres	BM
80	MEH80	E				MEH80R100	1 pulse/ 100 Litres	E
100	MEH100	E				MEH100R100	1 pulse/ 100 Litres	E
150	MEH150	E				MEH150R1000	1 pulse/1000 Litres	E
200	MEH200	E				MEH200R1000	1 pulse/1000 Litres	E
250	MEH250	E				MEH250R1000	1 pulse/1000 Litres	E
300	MEH300	E				MEH300R1000	1 pulse/1000 Litres	E

# connection ends:  
BM: BSP(male) couplings  
BF: BSP(female) couplings  
E: Table E flanged

Due to continuous product improvement, specifications may change without notice.

**ManuFlo**®™

Flow Measurement Products

ABN: 47 002 946 303

Rev: 0903/2

a division of

**MANU ELECTRONICS PTY LTD**

41 Carter Rd, Brookvale

Sydney NSW 2100 Australia

Ph: + 61 2 9938 1425, 9905 4324

Fax: + 61 2 9938 5852

Web: www.manuelectronics.com.au