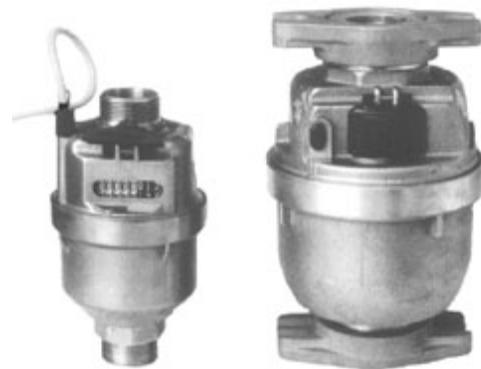


#### FEATURES

- Volumetric rotary piston principle, measures accurately in any position.
- Mechanical totaliser with retro-fit reed switch pulse output probe for connection to resettable totalisers and PLCs.
- Compliance with AS3565.1-1998. Australian Made.
- 15 and 20mm sizes with NSC approval.
- Accuracy  $\pm 2\%$  (q-min to q-max)  
Repeatability better than 0.2%



The PSM water meter range, in sizes 15, 20, 25 32 and 40mm, are suitable for measurement of water upto 50°C with a working pressure upto 1400 kPa. They offer great accuracy, long operating life, are highly resistant to tampering, and are fully approved by all local water authorities Australia-wide for drinking water applications.

The mechanical counter register is positioned for easy reading and displays to 0.1 Litre. The rotary piston measurement principle allows registration at very low flowrates. Meters can be installed in any position without affecting accuracy, and require no onsite calibration. An inline filter element prevents blockages, and an internal check valve stops backflows. Meters are supplied with a tamper-proof lead seal.

PSM flowmeters are manufactured from high quality materials - the body casing is made of gun-metal, and the measuring chamber from advanced plastics. All PSM meters are supplied with a gasket seat coupling connection kit.

PSM meters can be easily retro-fitted with a reed switch pulse output (T-probe), without removing the flow probe, or can be supplied with a T-probe already fitted for connection to resettable counters, batch controllers or PLC inputs.

**The PSM20-T2 provides the best pulse output resolution with 2 pulses per Litre (0.5 Litres/pulse).**

#### SPECIFICATIONS

| Model Number                 |                            | PSM15 | PSM20 | PSM25 | PSM40 |
|------------------------------|----------------------------|-------|-------|-------|-------|
| Size (mm)                    |                            | 15    | 20    | 25    | 40    |
| Pulse output (optional) rate | Litres/pulse               | 5     | 0.5   | 5     | 5     |
| Mechanical register          | Litres/minute              | 0.1   | 0.1   | 0.1   | 0.1   |
| Minimum registration         | Qr $\pm 5\%$ Litres/minute | 0.05  | 0.05  | 0.22  | 0.62  |
| Minimum flowrate             | Qm $\pm 5\%$ Litres/minute | 0.25  | 0.41  | 0.58  | 1.6   |
| Minimum trans. flow          | Qt $\pm 2\%$ Litres/minute | 0.5   | 0.5   | 0.7   | 2.5   |
| Nominal continuous flow      | Qn $\pm 2\%$ Litres/minute | 41.6  | 41.6  | 58.3  | 167   |
| Maximum intermittent flow    | Qs $\pm 2\%$ Litres/minute | 83    | 83    | 116   | 250   |
| Weight with couplings        | Kg                         | 1.6   | 1.8   | 2.7   | 8.2   |

#### Other Specifications

Headloss @Qn <25kPa, Max water temperature 50°C, Accuracy Qm to Qs +/-2%, Repeatability +/-0.2%.

Reed switch pulse V.max:24V, I.max:200mA, P.max:4W.

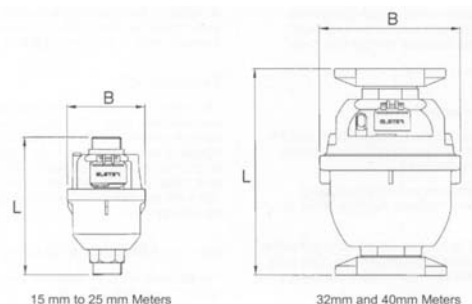
Cable: 2-core, 1 metre termination.

Suitable for clean water only.

Pipeline must be full at all times for correct measurement.

Purge the pipeline prior to install.

Once installed, bleed the liquid into the pipeline.



15 mm to 25 mm Meters

32mm and 40mm Meters

#### DIMENSIONS (mm)

| Model No: | PSM15 | PSM20 | PSM25 | PSM40 |
|-----------|-------|-------|-------|-------|
| Length L  | 133   | 153   | 177   | 231   |
| Width B   | 87    | 87    | 101   | 160   |

#### ORDERING CODES

| Part *    | Size (mm) | Description                              |
|-----------|-----------|--|
| PSM15     | 15        | 15mm Total                               |
| PSM20     | 20        | 20mm Total                               |
| PSM20A-T2 | 20        | 20mm Total and pulse o/p: 2 pulses/Litre |
| PSM25     | 25        | 25mm Total                               |
| PSM40     | 40        | 40mm Total                               |

\* add '-TP' suffix for 5 Litres/pulse optional Pulse Output