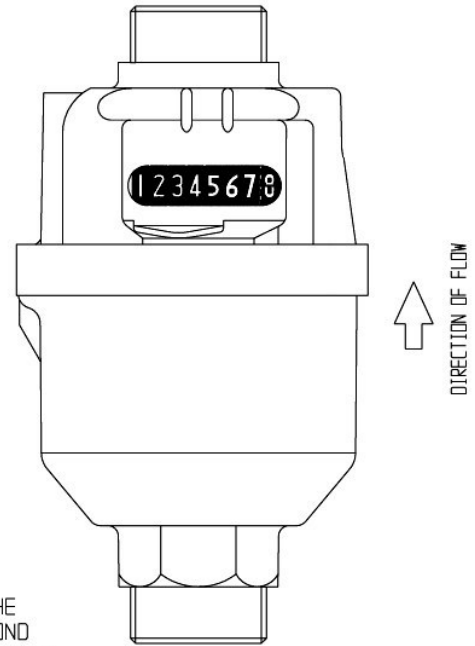
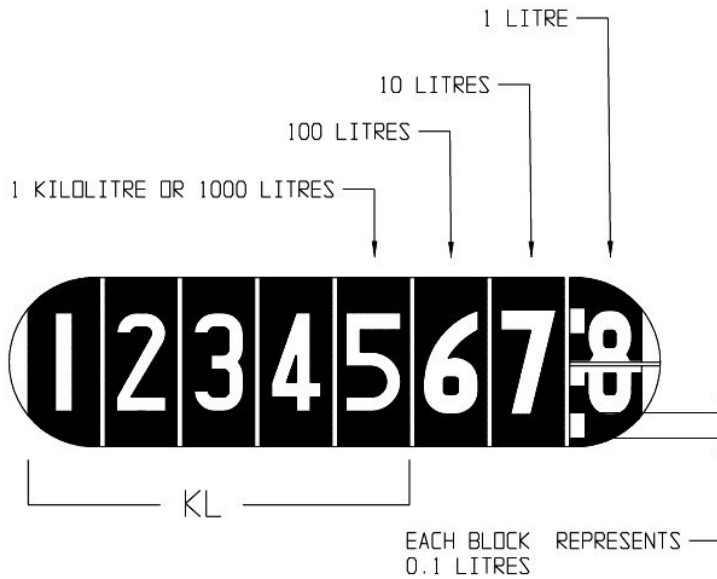


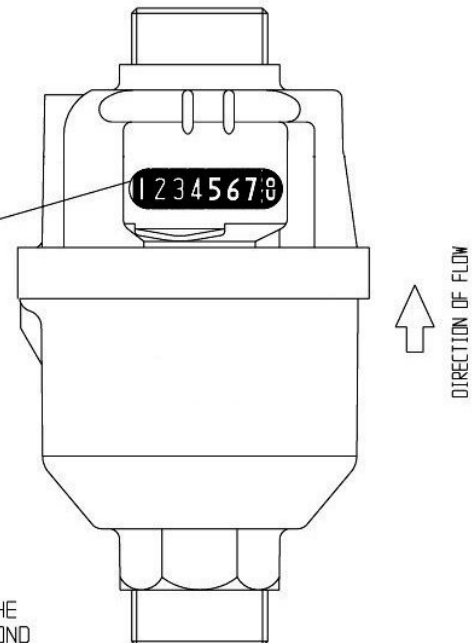
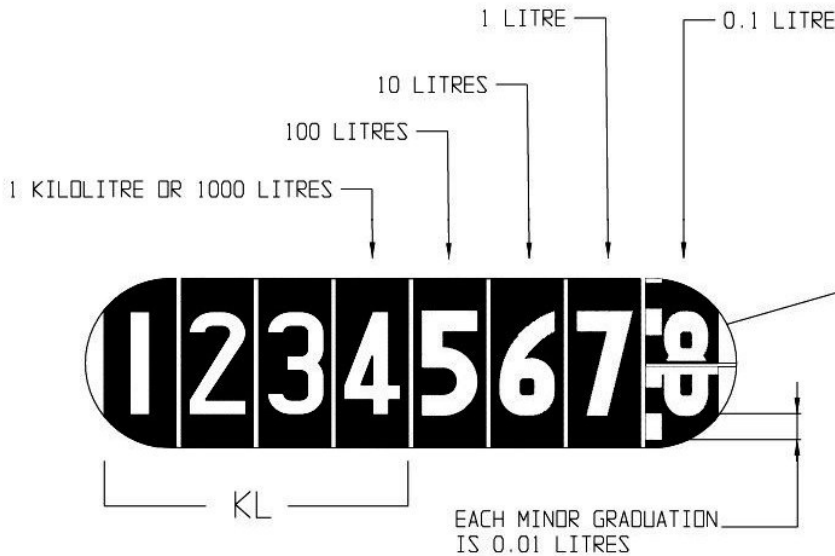
HOW TO READ YOUR 15-40MM 5x3 PSM WATER METER



THEREFORE THE ABOVE READING IS SIMPLY 12345 KILOLITRES & 678 LITRES

LEAK DETECTION: TURN OFF ALL HOUSEHOLD TAPS AND RECORD THE READING ON THE COUNTER. DO NOT OPERATE ANY WATER OUTLETS FOR ONE HOUR AND RECORD A SECOND READING. IF THERE IS A DIFFERENCE BETWEEN THE TWO READINGS A LEAK IS PRESENT.

HOW TO READ YOUR 4x4 PSM WATER METER



THEREFORE THE ABOVE READING IS SIMPLY 1234 KILOLITRES & 567.8 LITRES

LEAK DETECTION: TURN OFF ALL HOUSEHOLD TAPS AND RECORD THE READING ON THE COUNTER. DO NOT OPERATE ANY WATER OUTLETS FOR ONE HOUR AND RECORD A SECOND READING. IF THERE IS A DIFFERENCE BETWEEN THE TWO READINGS A LEAK IS PRESENT.

ManuFlo®™
Flow Measurement & Control Products
a division of

MANU ELECTRONICS PTY LTD
Rev: 1004/1

41 Carter Road, Brookvale
Sydney NSW 2100 Australia
Ph: + 61 2 9905-4324, 9938-1425
Fax: + 61 2 9938-5852
Web: www.manuelectronics.com.au
Email: sales@manuelectronics.com.au