

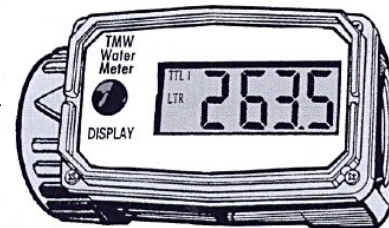
# TMW25

## 25mm compact Turbine flowmeter

### FEATURES

- Compact and lightweight.
- Ideal for hose guns.
- Large 4-digit display for easy reading, shows Grand Total and resetable Total.
- AAA battery powered.

Make sure that the arrow on the meter port outlet points in the direction of the fluid flow.



The TMW25 flowmeter is a digital turbine meter which is factory calibrated for the measurement of water. It's low pressure drop and high pressure rating allows the meter to be used for both gravity and pump (in-line) applications.

### INSTALLATION

Note: **Use thread sealant on all pipe threads**

- For pump hose end applications, use the appropriate fittings. NOTE: Hand tighten the fittings at each end of the meter housing. Do not use a spanner or similar tool else the plastic housing could be damaged.
- For applications, the meter may be installed either in a horizontal or vertical position.

### OPERATION

The flowmeter maintains two totals:

- The batch total (labelled TTL1) may be reset to measure flow during a single use.
- The cumulative total (labelled TTL2) provides continuous measurement and may not be manually reset. When the cumulative total reaches a maximum reading of 9999, it will automatically reset to zero.
- Press the DISPLAY button briefly to switch between the batch and cumulative total.

### ACTIVATE THE METER

CAUTION -- DO NOT operate meter within 2 to 5 cm of an electric motor

- Turn the meter ON by starting fluid flow or briefly pressing the DISPLAY button. The meter will display the batch or cumulative total from last use.
- Press DISPLAY briefly to display the batch total. Press the DISPLAY button for 3 seconds to zero the batch total.
- The meter is programmed to turn off automatically if not used for one minute.

### SERVICE INSTRUCTIONS

- Proper handling and care will extend the life and service of the meter. The TMW25 flowmeter is virtually maintenance-free.
- However, it is important the rotor moves freely. Keep the meter clean and free of contaminants. If the rotor does not turn freely, apply a penetrating lubricant on the rotor, shaft, and bearings. Remove any debris or deposits from the rotor using a soft brush or small probe. Be careful not to damage the turbine rotor or supports.
- **Blowing compressed air through the turbine assembly could damage the rotor.**

### BATTERY REPLACEMENT

The TM meter is powered by two AAA alkaline batteries which may be replaced while the meter is installed. When batteries are removed or lose power, the batch and cumulative totals reset to zero but the factory calibration is retained. If the meter display becomes dim or blank, replace the batteries as follows:

- (1) Remove the four Phillips-head screws from the face of the meter, and lift the faceplate from the turbine.
- (2) Remove the old batteries and clean any corrosion from the terminals.
- (3) Install new batteries. Make sure the positive post is in the correct position.
- (4) When the batteries are replaced, the faceplate will power ON. Check the display to ensure normal functions have resumed before assembling again.
- (5) Reseat batteries, if necessary, and position the faceplate on the turbine housing. To avoid moisture damage, make sure the seal is fully seated. Tighten the four screws on the faceplate.

### TECHNICAL SPECIFICATIONS

<b>Compatible fluids</b>	Water (do not use meter for fuel or chemicals).
<b>Flow range</b>	10 to 100 Litres/minute
<b>Accuracy</b>	± 5% of reading
<b>Max. working pressure</b>	1000 kPa (150 psi, 10 Bar)
<b>Inlet thread</b>	1" BSPT
<b>Outlet thread</b>	1" BSPT
<b>Max. temperature</b>	54 °C
<b>Weight (approx)</b>	0.2 kg
<b>Dimensions</b>	105mm (L) x 54mm (W) x 64mm (H)

Due to continuous product improvement, specifications are subject to change without notice.

**ManuFlo**®™

Flow Measurement & Control Products  
a division of

**MANU ELECTRONICS PTY LTD**

ABN: 47 002946303

Rev: 1003/1

41 Carter Rd, Brookvale

Sydney NSW 2100 Australia

Ph : + 61 2 9905 4324, 9938 1425

Fax : + 61 2 9938 5852

Web : [www.manuelectronics.com.au](http://www.manuelectronics.com.au)

Email: [sales@manuelectronics.com.au](mailto:sales@manuelectronics.com.au)