

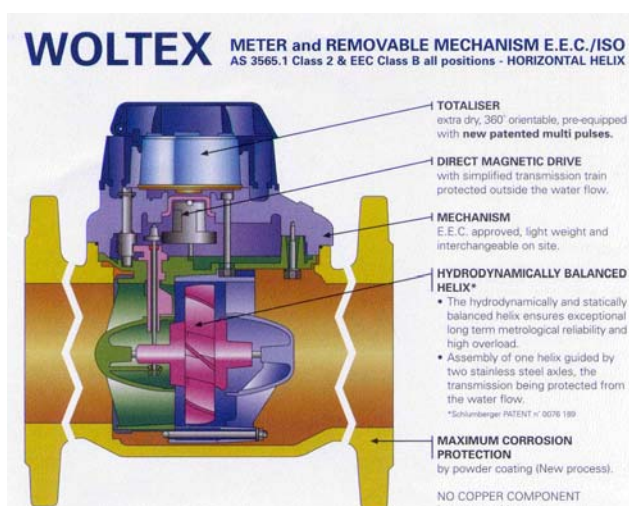


Woltex Turbine totaliser flowmeter with pulse o/p option

sizes: 50, 65, 80, 100, 125, 150 & 200 mm. 50°C and 130°C versions.

FEATURES

- Wide range of 50°C and 130°C models.
- Optional Pulse Output can be retro-fitted (for sizes < 100mm: 1 pulse/ 10 Litres; for sizes ≥ 100mm: 1 pulse/100 Litres)
- Ideal as a resettable meter when connected to ManuFlo ME5-T-B Indicator.
- Accuracy ±2% to Class B. EEC approved.
- Can pass small solids without jamming.
- Low headlosses ideal for gravitational flows.
- Table D flanged ends for process applications.



SW Woltex Turbine water meters operate on the velocity principle, where water enters the meter and drives the inner woltex turbine rotor. A direct magnetic drive operates the counter register. An optional volt-free Reed Switch pulse output module with a 2-metre lead can be retro-fitted to the mechanical counter display. The pulse output can be connected to a range of ManuFlo external resettable Indicators e.g. ME5-T-B. The mechanical register can be rotated 360°, and is waterproof and vacuum sealed to avoid condensation. The meters are pre-calibrated for a horizontal position. Installation of a strainer upstream of the meter is recommended to protect the hydraulics against raw particles. Also, straight pipe sections upstream (of length equal to 10x pipe diameter) and downstream (of length equal to 5x pipe diameter) are recommended to cancel the effects of any hydraulic perturbations.

SW meters are fully imported from France and made of the highest European quality durable materials. Body lengths are to EEC ISO lengths and are recommended for all water process and measurement applications (the 50mm and 80mm versions are also available in Australian Table D lengths). ANSI-150 flanged units are also available on request.

SPECIFICATIONS

* Order Code:	SW50	SW65	SW80	SW100	SW125	SW150	SW200
Size (mm)	50	65	80	100	125	150	200
Optional pulse o/p rate (Litres/pulse)	10	10	10	100	100	100	100
Mechanical register minimum litres	0.5	0.5	0.5	0.5	0.5	5	5
Minimum flow Qmin ±5% L/min	8.3	8.3	12.5	20	20	30	41.7
Transitional flow Qt ±2% L/min	16	16	25	33	33	50	59
Nominal flow Qn ±2% L/min	417	666	1,000	1,670	2,700	4,170	6,600
Maximum flow Qmax ±2% L/min	800	1,333	2,000	3,300	3,300	8,300	13,300
Max. Peak flow Qpeak ±2% L/min (less than 10 minutes continuous)	1,500	3,300	4,160	5,000	5,000	11,600	16,600
Head Loss at Qmax (bar)	0.2	0.5	0.55	0.23	0.23	0.15	0.12
Weight (kg), excl. packaging	12	13	24	20	20	34	55



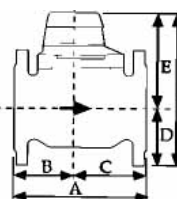
50mm flowmeter and optional '-CP' pulse module.

* to order with mechanical display and pulse output, add the suffix "-CP" to the Order Code.

Headloss @Qn 25kPa; Max. Temp: 50°C (hot water versions to 110°C with pulse output or 130°C without pulse output). Max. working pressure 20 bar; Max. totaliser reading 999 MegaLitres. ALL METERS to AS3565.1-1998 Class2 Specs, EEC Class B. Note: Meters measure lower than Qmin. Reed Switch pulse Vmax: 24V, Imax: 200mA, Pmax: 4W, 2-core pulse cable.

DIMENSIONS

SIZE mm:	50	65	80	100	125	150	200
Length A (Aust Table D)	311		413				
Length A (ISO)	200	200	200	250	250	300	350
Height F	243	253	261	279	294	339	391
Height D	82.5	92.5	100	110	110	142.5	171



Optional Hot Water version:
 to 130 °C (without pulse output)
 to 110 °C (with pulse output)
 Add '-H' to Order Code e.g.
 Order Code "SW50-H" for
 50mm 130°C Hot Water
 mechanical version (no pulse o/p).